

Facilities

Spacious lobbies for receptions and meet-the-artist gatherings



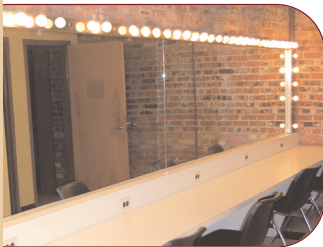
The new Boraie Lounge offers an intimate setting for President's Council members to meet, relax and enjoy refreshments prior to curtain and at intermission.



A new gift shop offers audiences a convenient way to purchase CDs and memorabilia of their favorite artists as well as theatrical and performing arts gifts



Ample dressing rooms with space for virtuoso entertainers to large opera and musical attractions



A stage measuring 45' by 37' accommodates all genres and companies.



State of the art sound and lighting equipment plus an all-wood orchestral shell, three Steinway grand pianos, and backstage catering to die for.



Management

Mark W. Jones, President & CEO mjones@StateTheatreNJ.org	ext. 511
Jerry Campagna, Chief Financial Officer jcampagna@StateTheatreNJ.org	ext. 516
Marion F. Combs, Senior VP for Development mcombs@StateTheatreNJ.org	ext. 541
Larry Dember, Director of Production ldember@StateTheatreNJ.org	ext. 529
Lian Farrer, VP for Education lfarrer@StateTheatreNJ.org	ext. 513
Daniel Grossman, VP for Marketing dgrossman@StateTheatreNJ.org	ext. 515
Dave Hartkern, Director of Operations (Rentals) dhartkern@StateTheatreNJ.org	ext. 518
Jessica Trechak, House Manager jtrechak@StateTheatreNJ.org	ext. 521
Don McKim, Ticket Office Manager dmckim@StateTheatreNJ.org	ext. 522
Kelly Blithe, Director of PR kblithe@StateTheatreNJ.org	ext. 517

State Theatre Regional Arts Center

11 Livingston Avenue
New Brunswick, NJ 08901
Administration: 732-247-7200
Administration fax: 732-247-4005
Box office: 732-246-SHOW(7469)
Box office fax: 732-745-5653
StateTheatreNJ.org



State TheatreNJ.org

Central Jersey's
Premier Performing Arts Center

NEW BRUNSWICK, NJ



A Vibrant Cultural Landmark

A magnificently restored 1850-seat 1921 vaudeville/movie theater in the heart of New Brunswick, NJ, the not-for-profit State Theatre presents a diverse lineup of world-class performing artists to enhance the quality of life for some 300,000 New Jersey, New York, and Pennsylvania residents who attend its performances annually—and, for thousands more who attend its school performances and in-school education programs, teacher workshops, and other outreach activities.

When not presenting its own performances, the theater is available for rental to community, civic, and performing arts organizations. Assistive listening systems for patrons who are hard of hearing and large print programs are available for most events.



Our Mission

The State Theatre exists to enrich the lives of people from varied backgrounds and to contribute to a vital urban environment by presenting the finest national and international performing arts at affordable prices.

The Four E's

Entertainment

What can you see at the State Theatre?

- The world's best symphony orchestras
- Family and children's entertainment
- Broadway shows
- Comedy
- Dance
- Opera
- Classical, pop, R&B, gospel, jazz, country, and world music
- Cutting edge performances

The State Theatre features some 200 performances annually, including: main stage performances, performances for schools, and rental events. Performers love the hall's exceptional acoustics and intimate feel.

While presenting traditional fare, the State Theatre aims to attract new audiences by adding fresh, exciting works which blur the boundaries of traditional art forms.

Education

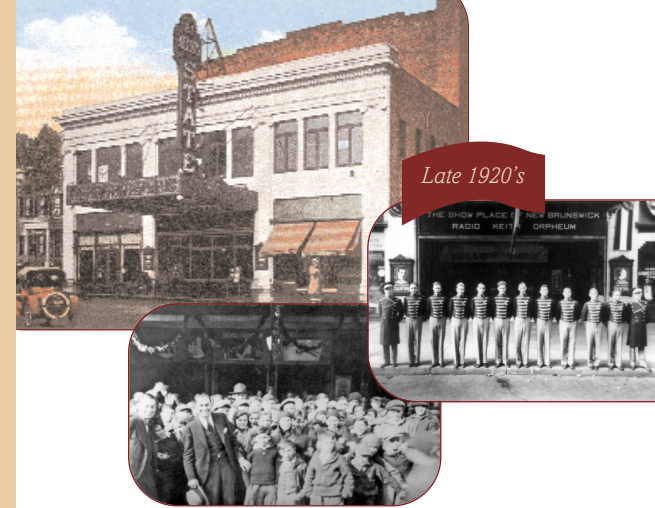
A key component of the State Theatre mission is providing arts education programs to inform and build future audiences. Children from public, private, parochial, and home schools throughout New Jersey attend live performances by the finest international artists, gaining exposure to a diverse mix of cultures and art forms.

Economic Vitality

The State Theatre is within walking distance of a wide selection of New Brunswick eateries and nightspots, and is a major contributor to the city's \$30 million arts, entertainment, and tourism industry.

Enhanced Quality of Life

Today, the theater attracts the vast majority of New Brunswick's 450,000 arts and entertainment patrons. The city's theaters, restaurants, medical centers, the county seat, Rutgers University, Johnson & Johnson's headquarters, and its central location within the state—have all fueled the city's revitalization and made it, once again, a popular and convenient destination for locals and visitors alike.



History

The State Theatre first opened its doors December 26, 1921. Famous theater architect Thomas W. Lamb designed it to showcase both feature films and live entertainment. One of the largest and most lavish theaters of its time in Central New Jersey, the State Theatre soon established a reputation as a premier entertainment venue known for opulent décor, superb acoustics, and an array of cinematic and live attractions. As time passed, however, it fell on hard times. By the 1970s, it was in ruins.

In the fall of 1987, the building was reclaimed from the ravages of time. Transformed back into a handsome, well-equipped facility for live performances, the State Theatre reopened April 24, 1988.

Most recently, in summer of 2004, with a \$3 million grant from the Middlesex County Open Space Recreation and Farmland Historic Preservation Trust Fund, the theater underwent an extensive restoration/renovation to return it as closely as possible to its original appearance while updating its sound and lighting systems.

Today, the State Theatre is once again a vibrant cultural landmark.

